



Incident Management Team

Braden Britt, IC

Fire Information (509) 808-6720 (Call or Text)

News Release – Lower Granite Fire

July 31st, 2024

Pomeroy, WA: The Lower Granite Fire started about 11:42am on July 29th, 2024. The fire quickly spread east with strong, gusty winds, threatening croplands, cattle, rangeland and structures.

Yesterday, Tuesday, July 30th; fire crews focused on unburned fuels in the canyons between the uplands and the Snake River. As a precaution, fire mitigation strategies were implemented to reduce the risk of flareups while also helping secure and maintain the fire line. These actives have helped reduce the risk to our fire crews while also minimizing the impact on the surrounding rangeland.

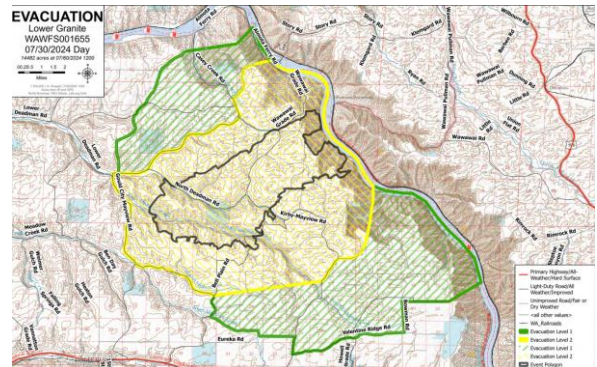
Today, hand crews having been hand trailing 100 feet into the interior from the fire line and 300 feet around structures. Crews have been evaluating riparian areas where unburned areas are still smoldering and extinguished areas that could spread to the surrounding land. Unburned fuels are continuing to burn in the canyons between the uplands and the Snake River. Helicopters have been working on extinguishing areas actively burning aided by field crews where accessible. Tonight, specialized crews will be utilizing infrared equipment around houses and structures within the fire zone to find any remaining hotspots. Wildland engines will continue to patrol the fire line throughout the night.

Level 2 and Level 1 Evacuations remain in effect (see map).

Current evacuations are updated on the Garfield County Sheriff's Facebook page at:

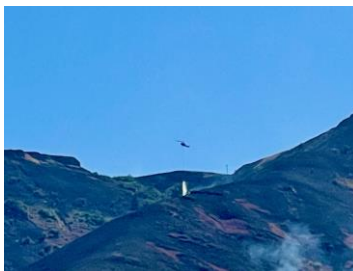
<https://www.facebook.com/GarfieldCountySheriff>

Quick Facts Lower Granite Summary	
Approximate Size	14,482 acres
Containment	Overall: 50%
Resources on Fire	3- 20 Person Hand Crew 16 - Firefighting Engines 1 - Dozer 4 - Water Tenders 1 - Helicopter (Type 2)
Total Personnel	144
Fire Danger	Extreme
Values at Risk	Farmland/Grain Crops, Rangeland/Cattle, Structures, Power Infrastructure



PUBLIC AND FIRE FIGHTER SAFETY IS THE NUMBER ONE PRIORITY

Do not enter into the burn area of the fire. Fire weakened trees can fall suddenly and hot deep ash pits can cause severe burns and are present within the burned area.



This Fire Update was produced by Isabelle Hoygaard Reeser, Northeast Washington Interagency Incident Management Team 1

Follow Us for
Updated Fire
Information:



InciWeb



@NewFireInfo